

EXAMINER'S BANKING PRACTICES SURVEY

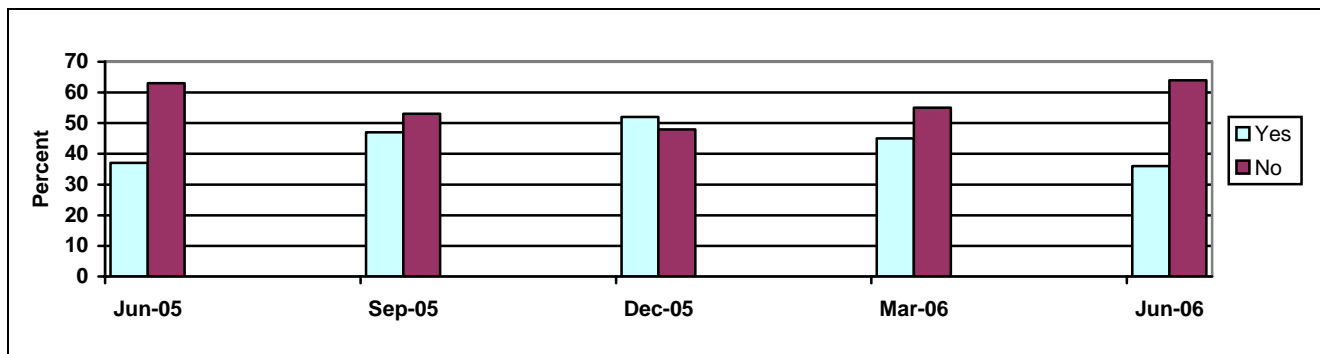
Second Quarter 2006

Division of Finance
State of Missouri

This survey is completed by bank examiners at the conclusion of each examination. **Second Quarter 2006** results are compiled from **31** responses.

LENDING

1. Since the last examination, has the institution significantly increased lending activity in any particular segment of the portfolio? "Significantly" means growth of 20% or more.



Of yes responses:

Loan Type	Jun-05	Sep-05	Dec-05	Mar-06	Jun-06
RE/Const/Land Devel	18%	32%	31%	21%	27%
RE/Agricultural	9%	5%	15%	18%	23%
RE/Commercial/Indust	18%	21%	23%	18%	11%
RE/Residential	12%	13%	10%	14%	11%
Agricultural	4%	11%	8%	11%	11%
Commercial/Industrial	30%	13%	8%	18%	17%
Consumer	9%	5%	5%	0%	0%

2. Is the institution active in making the following types of loans?

	Sep-05		Dec-05		Mar-06		Jun-06	
	Yes 6%	No 94%	Yes 0%	No 100%	Yes 0%	No 100%	Yes 7%	No 93%
Of Yes Responses-Loan type								
Sub-prime/Predatory lending	50%		0%		0%		0%	
Dealer paper	50%		0%		0%		100%	
Low or No-doc bus. lending	0%		0%		0%		0%	
High LTV home eq. lending	0%		0%		0%		0%	

3. Is the bank offering below market interest rates or reduced fees to attract loans?

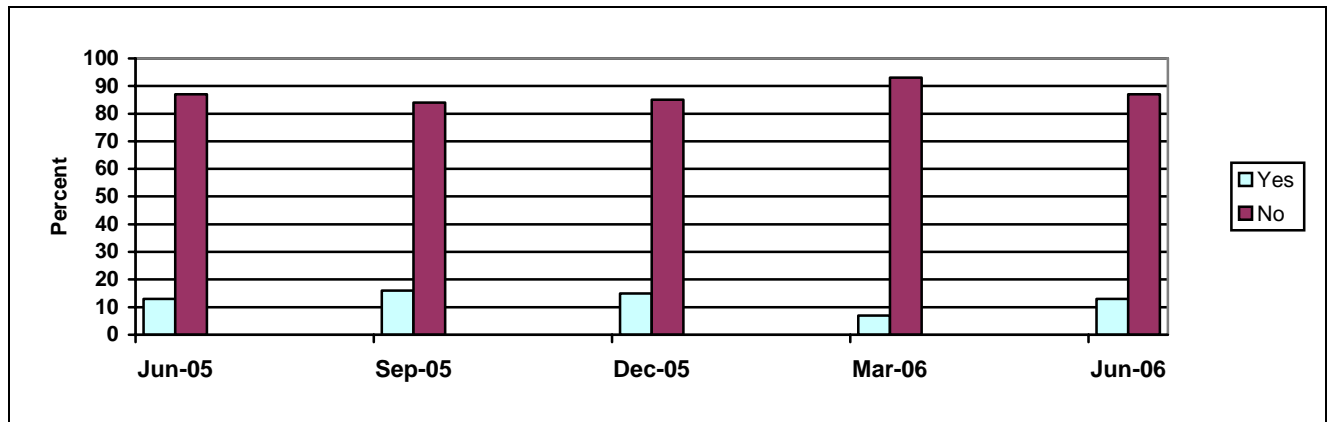
	Jun-05	Sep-05	Dec-05	Mar-06	Jun-06
Yes	7%	3%	0%	0%	10%
No	93%	97%	100%	100%	90%

Examiner's Banking Practices Survey

4. Does the institution use credit scoring models for loan decisions?

Of Yes Responses - Loan type	Sep-05		Dec-05		Mar-06		Jun-06	
	Yes 19%	No 81%	Yes 15%	No 85%	Yes 3%	No 97%	Yes 13%	No 87%
Credit card	8%		8%		20%		12%	
Consumer	17%		31%		20%		44%	
Residential mortgage	33%		31%		20%		22%	
Small business	25%		23%		20%		22%	
Other	17%		7%		20%		0%	

5. Are there indications the bank is incurring "more-than-normal" risk to boost new loans?



Of yes responses:

	Jun-05	Sep-05	Dec-05	Mar-06	Jun-06
Making collateral based loans?	43%	37%	25%	33%	44%
Reduced collateral margins?	0%	18%	13%	0%	12%
Not requiring cash flow projections?	14%	9%	25%	34%	22%
Liberal repayment terms? (reduced debt service ratios; interest only; deferred, extended, balloon or negative amortization payments)	43%	27%	13%	0%	22%
Waiving guarantees or other documentation?	0%	0%	13%	33%	0%
Other	0%	9%	11%	0%	0%

6. Describe potential risk in current underwriting practices for:

	Jun-05	Sep-05	Dec-05	Mar-06	Jun-06
Agricultural Loans					
Minimal	90%	78%	76%	90%	74%
Moderate	10%	19%	24%	10%	23%
Substantial	0%	3%	0%	0%	3%
Commercial Loans					
Minimal	70%	56%	67%	68%	61%
Moderate	30%	41%	33%	29%	32%
Substantial	0%	3%	0%	3%	7%
Consumer Loans					
Minimal	77%	88%	88%	87%	74%
Moderate	23%	9%	12%	13%	26%
Substantial	0%	3%	0%	0%	0%
Residential Loans					
Minimal	73%	81%	76%	84%	77%
Moderate	27%	16%	24%	16%	23%
Substantial	0%	3%	0%	0%	0%

Examiner's Banking Practices Survey

7. Differences between actual lending practices and written policies are:

	Jun-05	Sep-05	Dec-05	Mar-06	Jun-06
Agricultural Loans					
Minimal	97%	84%	97%	87%	94%
Moderate	3%	16%	3%	13%	3%
Substantial	0%	0%	0%	0%	3%
Commercial Loans					
Minimal	83%	75%	76%	84%	81%
Moderate	17%	22%	24%	13%	16%
Substantial	0%	3%	0%	3%	3%
Consumer Loans					
Minimal	93%	94%	94%	90%	84%
Moderate	7%	6%	6%	10%	16%
Substantial	0%	0%	0%	0%	0%
Residential Loans					
Minimal	97%	84%	85%	93%	93%
Moderate	3%	16%	15%	7%	7%
Substantial	0%	0%	0%	0%	0%

8. With regard to agricultural loans, describe the potential risk the bank faces from:

	Jun-05	Sep-05	Dec-05	Mar-06	Jun-06
Carryover Debt					
Minimal	97%	84%	85%	90%	77%
Moderate	3%	16%	15%	10%	23%
Substantial	0%	0%	0%	0%	0%
Phase-out of Farm Subsidies					
Minimal	93%	97%	85%	84%	87%
Moderate	7%	3%	12%	10%	13%
Substantial	0%	0%	3%	6%	0%
Drop in Land Values					
Minimal	90%	81%	76%	74%	84%
Moderate	10%	16%	21%	19%	16%
Substantial	0%	3%	3%	7%	0%

9. Has the ratio of Total Adversely Classified Items/Tier 1 Capital & ALLL increased (+) or decreased (-) since the prior examination?

No. Banks with Inc/(Dec) in ratio (%)	Sep-05		Dec-05		Mar-06		Jun-06	
	+	-	+	-	+	-	+	-
Average Inc/(Dec) in Ratio	60%	40%	58%	42%	57%	43%	44%	56%
	9.4	(9.0)	9.6	(6.9)	6.4	(8.3)	8.1	(5.8)
Cause of Increase								
Eased underwriting standards	4%		4%		4%		5%	
Deterioration in new loans	9%		15%		24%		19%	
Deterioration in older loans	61%		42%		60%		48%	
Participations or out-of-territory	0%		8%		4%		0%	
Economic conditions	4%		15%		8%		5%	
Changes in lending personnel	0%		0%		0%		0%	
New types of lending activity	4%		4%		0%		0%	
Other	18%		12%		0%		23%	

10. Estimate loan classifications at this examination into the following types:

Loan Type	Jun-05	Sep-05	Dec-05	Mar-06	Jun-06
RE/Const/Land Development	7%	9%	25%	15%	4%
RE/Agriculture	3%	6%	3%	7%	2%
RE/Commercial/Industrial	36%	37%	25%	30%	54%
RE/Residential	26%	25%	26%	14%	11%
Agricultural	2%	3%	3%	1%	1%
Commercial/Industrial	22%	14%	12%	27%	25%
Consumer	4%	6%	6%	6%	3%

Ratios from March 2005 and forward are weighted by dollar volume of classified loans for all respondents. Prior ratios are an average of percentages from each bank (not dollar weighted).

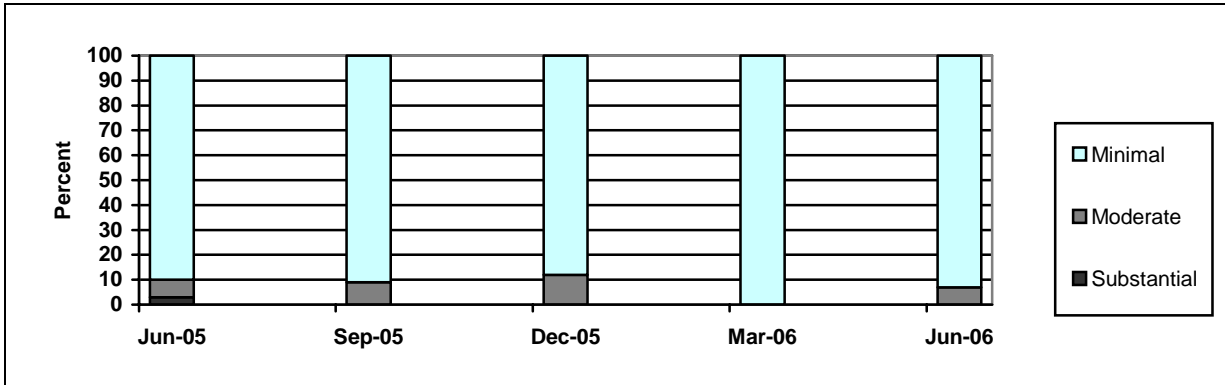
Examiner's Banking Practices Survey

INVESTMENTS

11. Since the last examination, has the institution purchased securities without understanding the characteristics of the issue?

	Jun-05	Sep-05	Dec-05	Mar-06	Jun-06
Yes	0%	0%	0%	0%	0%
No	100%	100%	100%	100%	100%

12. Differences between actual investment practices and written policies are:



OTHER

13. Has the bank established a borrowing line with FHLB?

	Jun-05	Sep-05	Dec-05	Mar-06	Jun-06
Yes	87%	87%	73%	81%	58%
No	13%	13%	27%	19%	42%
If yes, does the bank actively borrow from the FHLB?					
Yes	77%	89%	75%	76%	89%
No	23%	11%	25%	24%	11%

14. Does the bank hold off-balance sheet derivatives?

	Jun-05	Sep-05	Dec-05	Mar-06	Jun-06
Yes	3%	3%	0%	0%	10%
No	97%	97%	100%	100%	90%

15. List nontraditional activity the institution is engaged in.

	Jun-05	Sep-05	Dec-05	Mar-06	Jun-06
Yes	77%	75%	70%	84%	81%
No	23%	25%	30%	16%	19%
Of those that do:					
Nondeposit Investment Sales	26%	21%	23%	28%	19%
Insurance Sales	10%	11%	17%	7%	10%
Real Estate Loan Secondary Market Sales	26%	23%	21%	26%	21%
Non-transactional Web Site	2%	9%	9%	4%	6%
Transactional Web Site	36%	36%	26%	33%	44%
Other	0%	0%	4%	2%	0%